

## Product Specifications

### Full Color Receiving Card R507 (B)

V4.0 20171115

## Features:

---

1. For the color screen, die-casting aluminum boxes and other lightweight structure design, standard interface;
2. Free external power supply design, through the adapter board to the card for power supply, increase hardware stability;
3. Inherit all the technical advantages and features of R500 series receiver card
4. With A60X, A30, A30 +, C30, C10 and other asynchronous sending card to use;
5. Can output 16/20/24 group parallel data.

## Main parameters

---

<b>Working with sending card</b>	Used in Sending card A60X、 A30、 A30+、 C30、 C10 etc.
<b>Support modules</b>	Used indoor, outdoor full color led displays, and single display; Support MBI5041/5042、 MBI5050、 MY9221、 MY9268 etc. and PWM IC
<b>Scan mode</b>	Static and 1-32 scan randomly
<b>Communication distance</b>	Gigabit Ethernet
<b>One PCS Receiving card control range</b>	256*192(suggest) Max: 190,000 points, 1024 * 192
<b>Receiving cards Connection settings</b>	Receiving card set sequence randomly, and recognized automatically or by hand
<b>Gray scale</b>	0-65536

<b>Smart setting</b>	Smart setting of few simple steps by HDPlayer, and according to led module circuit board, it can smart setting too.
<b>Play contents</b>	Play video、animation、picture、text、3D text、 excel、PPT、time、 counter etc.
<b>Test functions</b>	It have test button, and test modes of red、 green、 blue、 white、 gray、 oblique line、 grid、 spots etc.
<b>Blanking circuit</b>	Support
<b>Communication distance</b>	150meters by CAT5 or CAT6 LAN Cable
<b>Port</b>	2pin 5V Power x1,1000M LAN portX2, HUB75E port x 8
<b>Voltage</b>	4V-6V
<b>Working temperature</b>	-40°C-85°C

## HUB signal details

---

### 1) 16 RGB (default)

1	A	B	2
3	OE	LAT	4
5	CLK	VCC	6
7	C	D	8
9	R1a	G1	1 0
1 1	R1b	B1	1 2
1 3	GN D	R2a	1 4
1 5	G2	R2b	1 6

1	B2	R3a	1
7			8
1	G3	GN	2
9		D	0
2	R3b	B3	2
1			2
2	R4a	G4	2
3			4
2	R4b	B4	2
5			6

2) 20 RGB

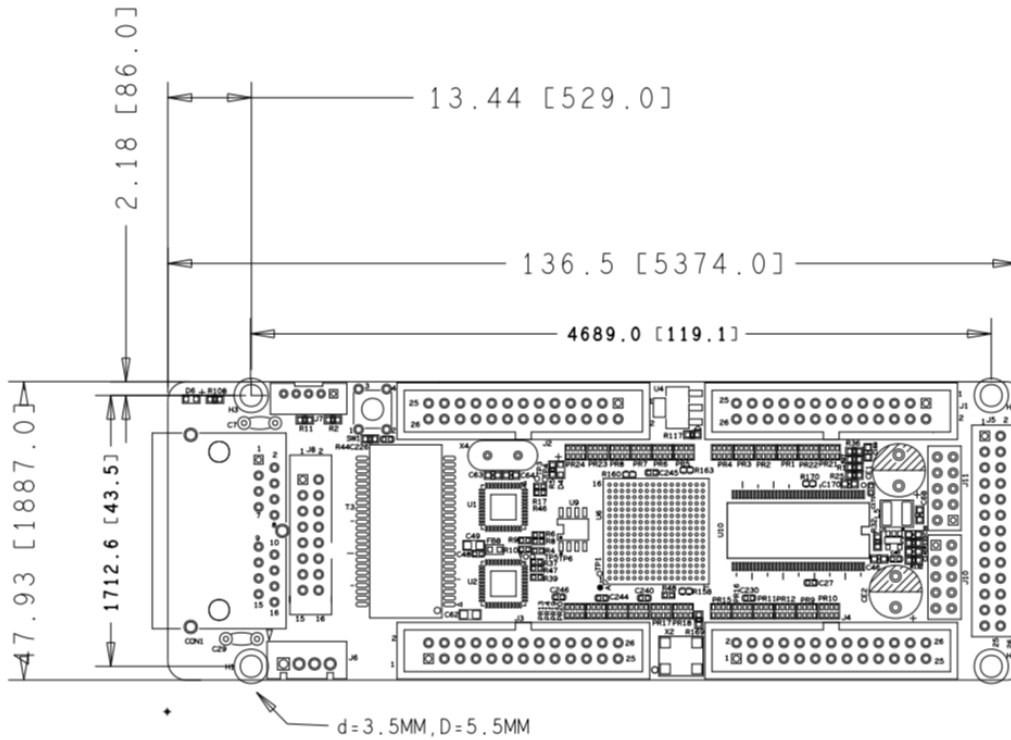
1	A	B	2
3	OE	LAT	4
5	CLK	VCC	6
7	C	D	8
9	E	R1	1
			0
1	G1	B1	1
1			2
1	GND	R2	1
3			4
1	G2	B2	1
5			6
1	R3	G3	1
7			8
1	B3	GND	2
9			0
2	R4	G4	2
1			2
2	B4	R5	2
3			4
2	G5	B5	2
5			6

### 3) 24 RGB

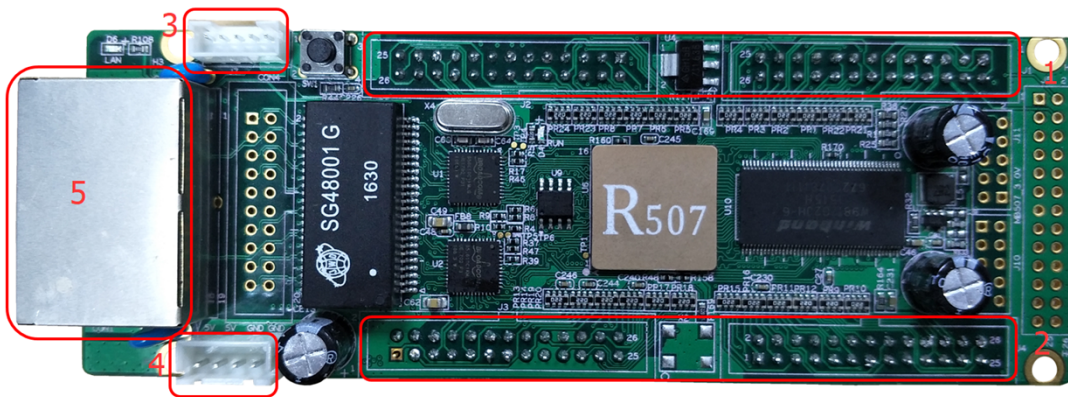
1	A	B	2
3	OE	LAT	4
5	CLK	VCC	6
7	R1	G1	8
9	B1	R2	10
11	G2	B2	12
13	GND	R3	14
15	G3	B3	16
17	R4	G4	18
19	B4	GND	20
21	R5	G5	22
23	B5	R6	24
25	G6	B6	26

Assemble Photos

---



## Appearance Description



- ①: 2 groups 26PIN output interface, connect the LED screen.
- ②: 2 groups 26PIN output interface, connect the LED screen.
- ③: Indicator interface.
- ④: Power interface can be accessed 5V voltage;

⑤: Gigabit Ethernet port.

## Technical Parameters

---

	Minimum	Typical value	Maximum
Rated voltage (V)	4.2	5.0	5.5
Storage temperature(°C)	-40	25	105
Work environment humidity (°C)	-40	25	80
Work environment humidity (%)	0.0	30	95

## Precaution

---

1) In order to ensure the long-term stable operation of the system; please try to use the standard 5V power supply voltage.